



LOOPBRUGGEN PASSERELLES

Onderneming - Entreprise:

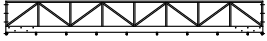
Werf - Chantier:

Afhaling - Enlevement / Terugvracht - Retour

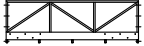
Datum vracht - Date transport

Opmerking - Remarque:

1/1



Loopbruggen - Passerelles L=8,50m B=1,20m



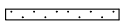
Loopbruggen - Passerelles L=3,50m B=1,20m



Loopbruggen - Passerelles L=3,50m B=0,60m



Loopbruggen - Passerelles L=2,50m B=0,60m



Verbindingsstukken voor loopbruggen

Pièces de jonction pour passerelles



Bouten - Boulons

M12x60

M20x120

L= 1,00m

L= 1,50m

L= 2,00m

L= 2,40m

L= 3,00m

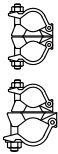
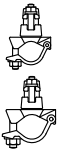
L= 4,00m

L= 5,00m

L= 6,00m

Stellingbuis Ø48,3x3,25

Tube échaf. Ø48,3x3,25



Vaste koppeling - Raccord fixe Ø 48x48

Draaikoppeling - Raccord orientable Ø48x48

Vaste koppeling - Raccord fixe Ø 48x60

Draaikoppeling - Raccord orientable Ø48x60